

---

# PDS Calibration & Software Update Process

---



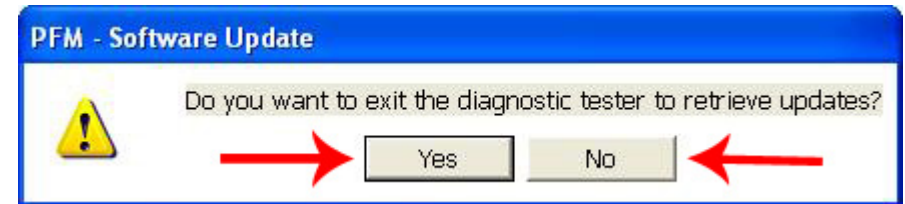
This document assumes PFM is installed on a PC that **does not have** Internet access.



## Software Update

- PFM will check for updates at startup if an internet connection is available. You will be notified if any updates are available as shown in figure 1. You can choose to exit PFM and retrieve the updates or dismiss the pop-up and continue working with PFM.

**Figure 1**

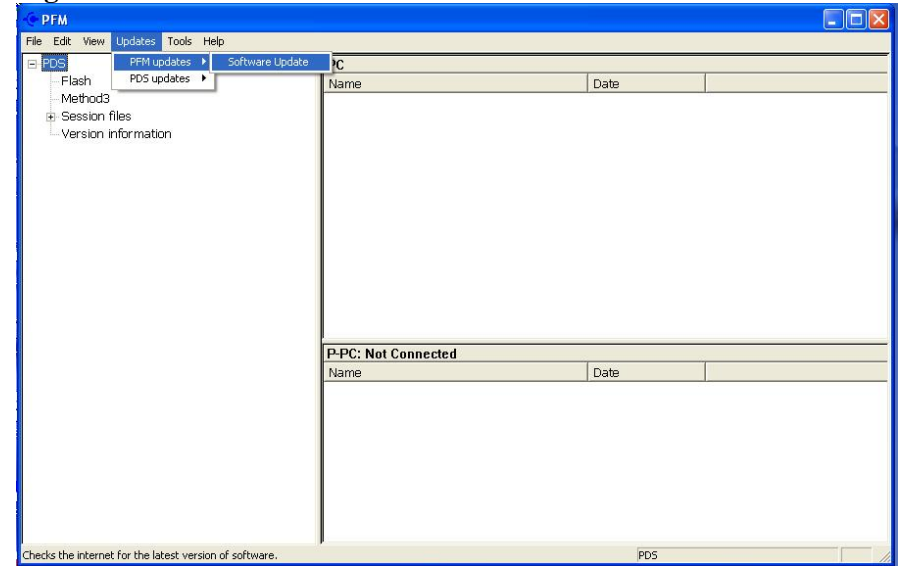


- You will receive a notification that updates are available no more than once a day.
- You will not receive notification if no updates are available.

## Manual Software Update

Manual checks for software updates can be done while running PFM by selecting Updates->PFM Updates->Software Update. Shown in Figure 2.

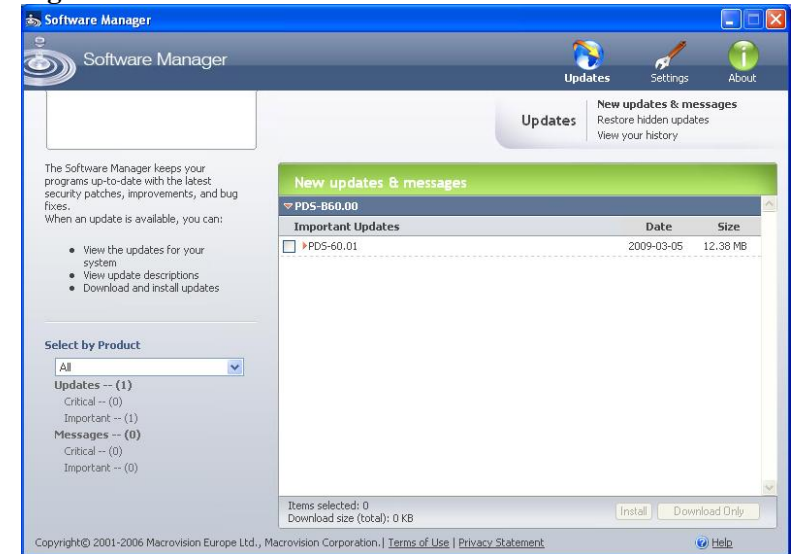
Figure 2



## Software Manager

If updates are available, the Software Manager will display under "Important Updates". Database and patch updates will be included in a single software update.

Figure 3



Notes:

Select an update to enable the "Install" and "Download Only" button. Click on "Install" to start the installation process or "Download only" to save the update to PC. Shown in Figure 3 and 4.

Figure 4

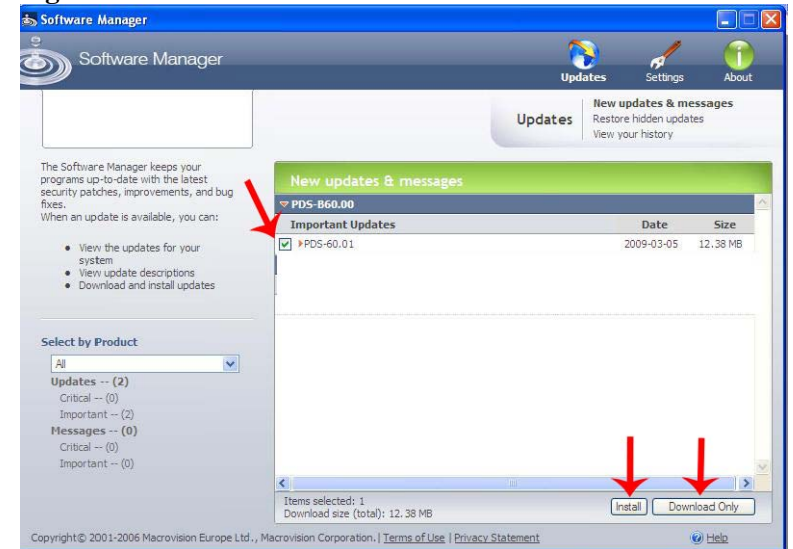
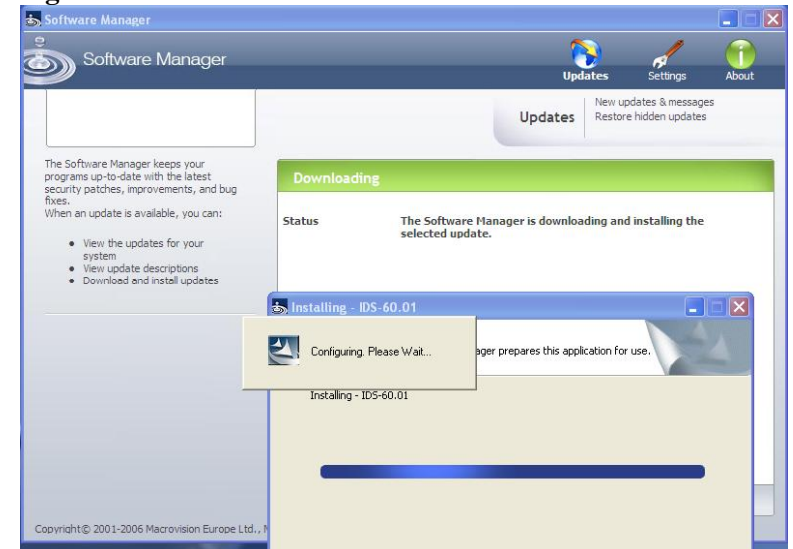


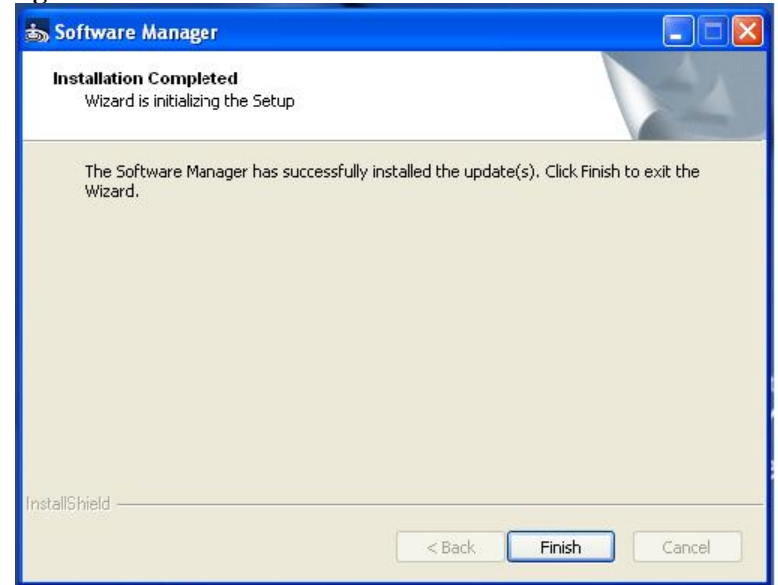
Figure 5



Notes:

Once the software update installation is complete, the screen shown in Figure 6 will appear. Click "Finish" to complete the process.

Figure 6



Once the software installation is complete, you must restart PFM. The version information page will display the software release level. In this example PDS software release is at PDS-60.01 as shown in Figure 7.

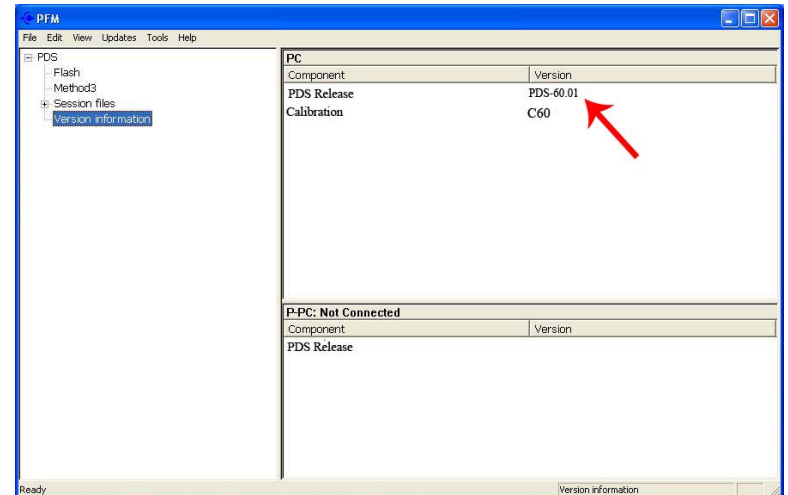


Figure 7

## Download Calibration Files

1. Enter the calibration filename, click "**Download**"
2. Save the file to a USB Key.
3. Copy the file from the USB Key to the C:\Program Files\Ford Motor Company\Calibration files folder. As shown in Figure 2.

Figure 1

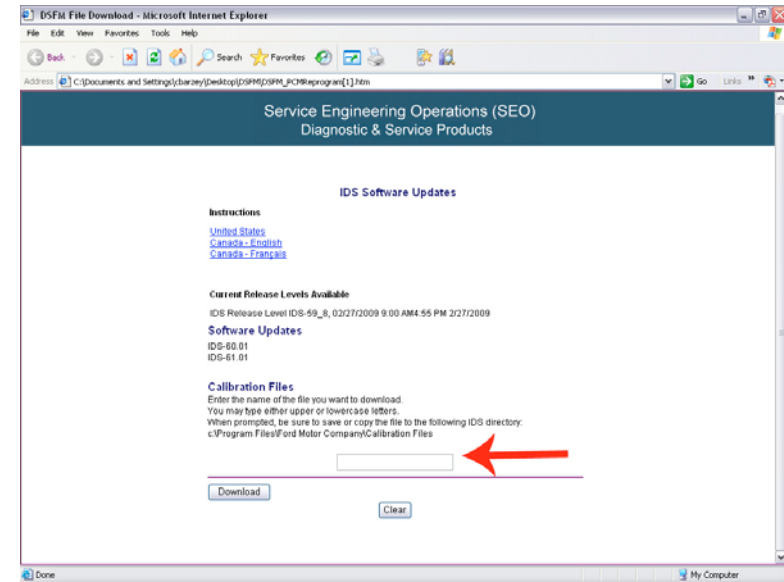
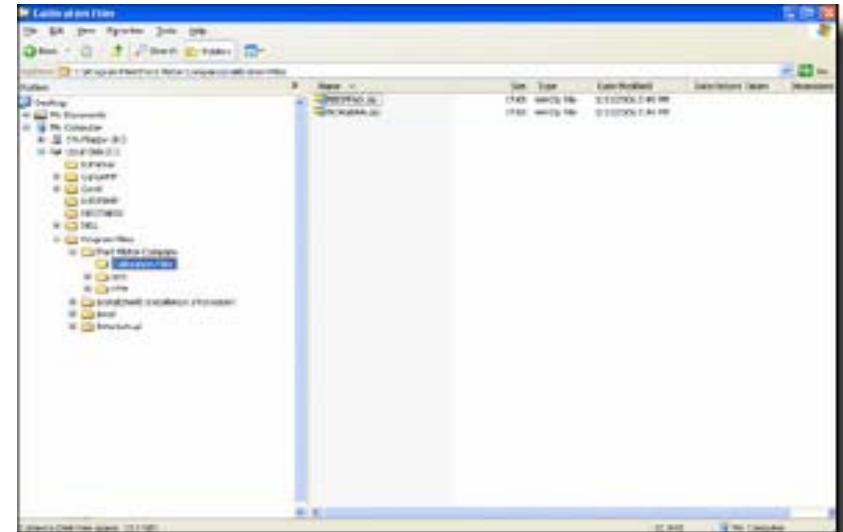


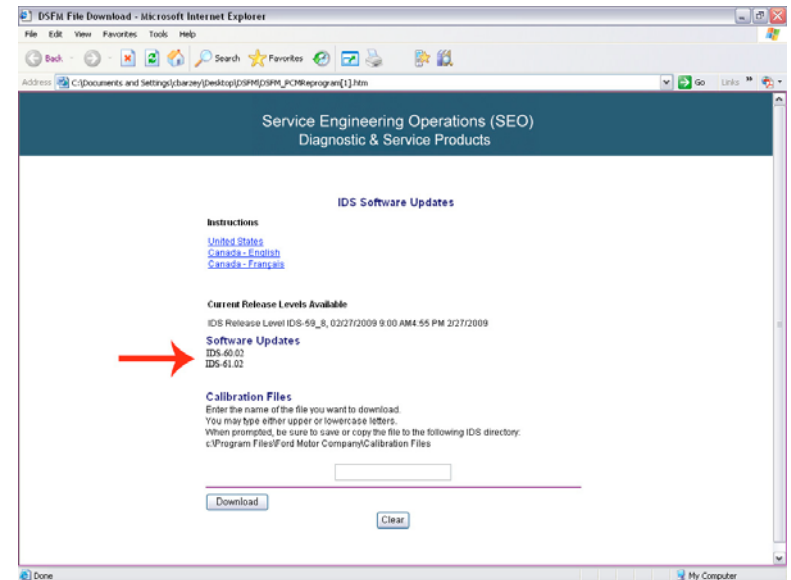
Figure 2



## Download Software Update Files

1. Click on the Software Update file as shown in figure 1 then "Save" the file(s) to a USB key/drive or CD ROM.
2. The file will be in .exe format. Run the .exe file to perform the Software Update (**IDS should be closed**).

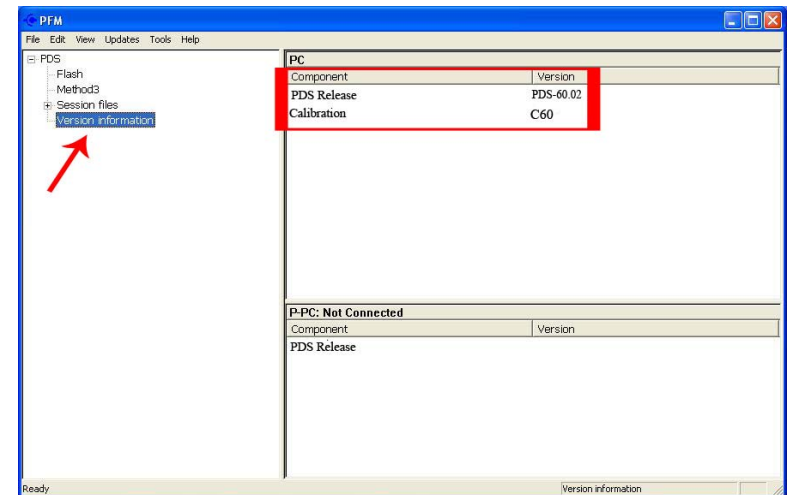
Figure 1



## Verifying Software Update

3. To verify the updates are complete, select "**Version Information**" in the left column. PFM will show the software release. In this example the software release level is updated to PDS-60.02. Shown in Figure 2.

Figure 2



## Applying Updates to PPC

1. After PFM is updated, then apply the updates to the PPC. As shown in Figure 1.
2. Click on "**Updates->PDS Updates->Apply Updates**". Ensure the PDS (Portable Diagnostic Software) is not running at the time.
3. Verify PDS software release by clicking on "Select System Options" button. As shown in Figure 2.

Figure 1

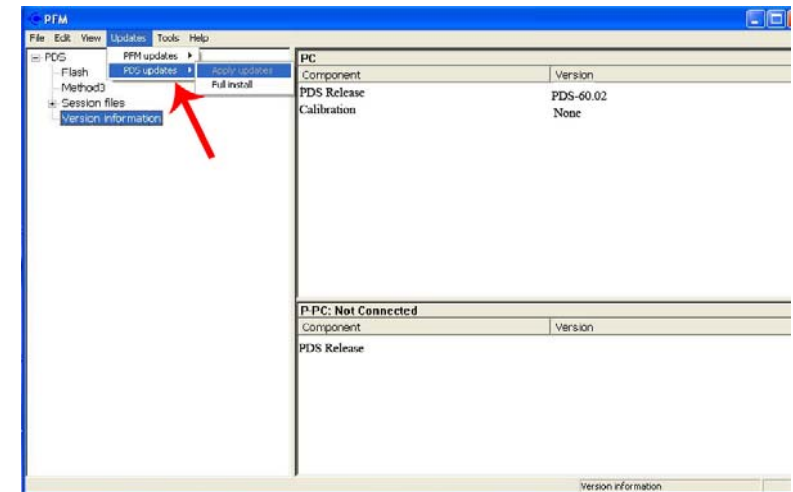
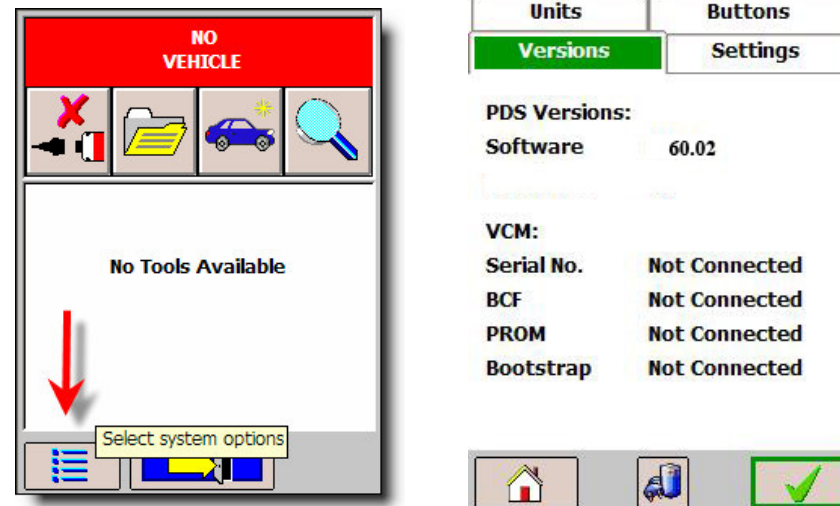


Figure 2



# PDS Software Updates

---

## **Trademark Acknowledgements**

**Ford** is a registered trademark of Ford Motor Company.

## **Copyright Information**

IDS Software Updates

©2009 Ford Motor Company. All rights reserved

The information, specifications and illustrations in this manual are based on the latest information available at the time of printing. **Ford Motor Company** reserves the right to make changes at any time without notice.