

- | | |
|---|--------------------------------|
| <ul style="list-style-type: none">• DRIVEABILITY—THINK NEIGHBOR “NO ENABLE” TROUBLESHOOTING FLOW CHART• ELECTRICAL—THINK NEIGHBOR “NO ENABLE” TROUBLESHOOTING FLOW CHART | Article No.
02-25-9 |
|---|--------------------------------|

THINK: 2002 THINK NEIGHBOR

ISSUE

Some 2002 THINK Neighbor vehicles may exhibit a “No Enable” condition where the vehicle will not operate due to a system or component failure.

OTHER APPLICABLE ARTICLES: 02-13-3

WARRANTY STATUS: INFORMATION ONLY

OASIS CODES: 203000, 203200, 204000, 204100,
601300, 603300, 607000, 607500,
609000, 610500, 611000, 611500,
612500, 614000, 698298

ACTION

This troubleshooting flow chart should be used to assist in identifying the origin of most of the No Enable conditions.

SERVICE INFORMATION

Refer to the following Diagnostic Flow Chart to aid in diagnosis for “No Enable” condition (Figure 1).

NOTE: The information in Technical Service Bulletins is intended for use by trained, professional technicians with the knowledge, tools, and equipment to do the job properly and safely. It informs these technicians of conditions that may occur on some vehicles, or provides information that could assist in proper vehicle service. The procedures should not be performed by “do-it-yourselfers”. Do not assume that a condition described affects your car or truck. Contact a Ford, Lincoln, or Mercury dealership to determine whether the Bulletin applies to your vehicle.

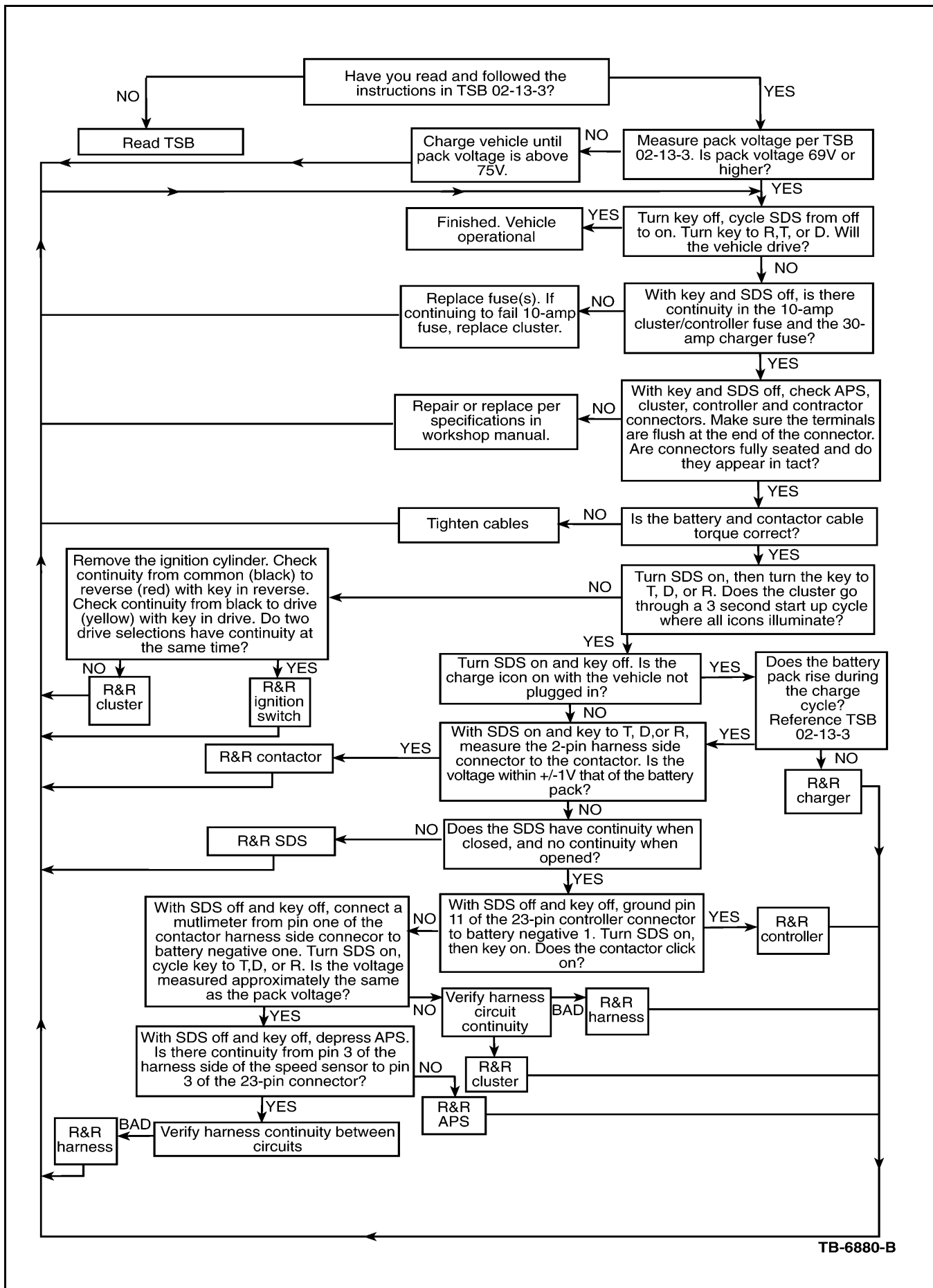


Figure 1 - Article 02-25-9